



## UPBLAST & HOODED ROOF VENTILATORS

Daltec's Upblast and Hooded Roof Ventilators are designed to provide an efficient and economical means of exhausting large volumes of air. These versatile units are used in areas that must be ventilated of, heat, dust, fumes or injurious gases. Adaptable for the ventilation of both commercial and industrial buildings.

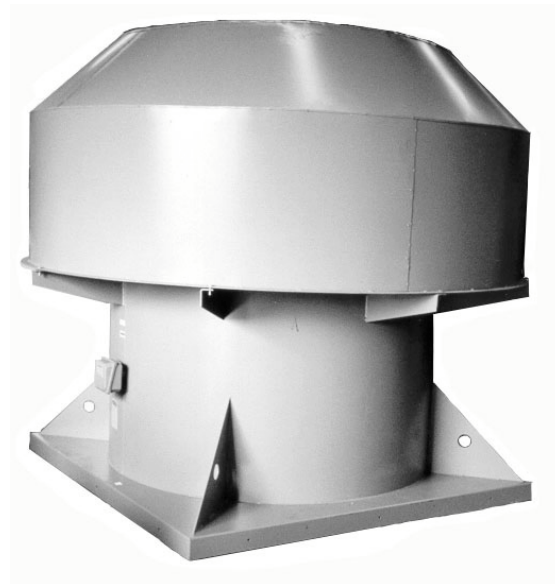
Our roof ventilators are available in two designs - Upblast (UBRE) and Hooded (DBRE). Upblast roof ventilators exhaust air from your facility straight up into the atmosphere. Hooded roof ventilators exhaust air along the roofline and can be fitted with modulating dampers.

Hooded designs are also available as intake fans to supply clean fresh air into a facility. These supply air fans can be fitted with washable or disposable filters and a modulating damper to control airflow.

Exhausting air can be a blast ... with a Daltec Upblast Roof Ventilator.

### Design Features

- Available as either belt or direct drive
- Standard size from 12"–72" diameter
- Stainless steel construction available
- Wide selection of impeller available
- Custom sizes up to 120" diameter
- Aluminum construction available
- Continuously welded housings



UPBLAST & HOODED ROOF VENTILATORS

# Daltec Fans ... maximum efficiency, maximum performance

## STANDARD ITEMS & ACCESSORIES

### Curb Cap:

Unit ships complete with a curb cap, which fits over the roof curb. Oversized curb caps are available.

### Wind Band with Butterfly Dampers (UBRE only):

Wind bands prevent wind resistance at discharge. Butterfly dampers are watertight and prevent the elements from entering your facility when the unit is turned off.

### Mushroom Hood (DBRE only):

Our mushroom hood helps prevent outside elements from entering your facility. Can be used for intake, exhaust or both intake and exhaust.

### Extended lube lines:

Makes for easy maintenance of motor and/or bearings.

### Extended motor leads:

Makes for easy wiring of the unit during installation.

### Finish:

Non-standard paint finishes; epoxy, heresite Teflon, rubber and special colors are available on request.

### Arrangements:

Units are available as direct drive arrangement 4 or belt drive arrangement 9.

## OPTIONAL ITEMS & ACCESSORIES

### Exotic Material Impellers:

Impellers constructed from aluminum, stainless steel, fiberglass are available on request.

### Exotic Material Housings:

Housing constructed from aluminum, stainless steel, fiberglass, titanium or hasteloy are available on request. Please contact the factory for other metal requests.

### AMCA "A", "B" or "C" Spark Resistant Construction also available



#### Canada:

Daltec Industries Ltd.  
Guelph, Ontario, N1E 5V5  
Tel: (519) 837-1921  
Toll Free: (888) 532-5832  
[faninfo@daltecfans.com](mailto:faninfo@daltecfans.com)  
[www.daltecfans.com](http://www.daltecfans.com)

#### United States:

Daltec Industries Ltd.  
Maple Grove, Minnesota, 55311  
Toll Free: (888) 5Daltec  
(888) 532-5832  
[wdimarco@daltecfans.com](mailto:wdimarco@daltecfans.com)  
[www.daltecfans.com](http://www.daltecfans.com)

## UPBLAST & HOODED ROOF VENTILATORS

### High Temperature Applications:

Fans over 300°F require special protection. Heat slingers are used to dissipate heat along the motor shaft. Motor heat shields help deflect heat away from motors. High temperature shaft seals and special grease work to prolong bearing life.

### Access Doors:

Many styles of access for maintenance and inspection are available. Bolted, hinged and quick releases are typical but Clamshell and Swing Out designs are available as well.

### Control Dampers:

Parallel or opposed blade control dampers can be installed directly on in the curb cap. Electric or pneumatic damper actuators can be provided as well.

### Outlet Diffusers:

A supply fan option use to evenly distribute intake air throughout the discharge area.

### Disconnect Switch:

NEMA enclosures available mounted and wired. A safety feature to lock off fan during maintenance.

### Weathercovers:

Weathercovers protect personnel from moving parts while permitting circulation of air around drive components and motor. Cover also protects the motor and drive from the elements.

### Guards.

OSHA inlet and outlet guards are available.

### Bird Screen:

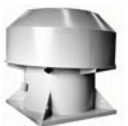
Bird screen stops birds from entering your facility and building nests in dangerous areas.

### Bearings:

Anti-friction ball or roller bearings for grease or oil lubrication and water-cooled journal type bearings are available. Specific L10 life as requested. Temperature and vibration sensing devices can also be installed for you. Daltec can meet or exceed all of your bearing specifications.



UPBLAST & HOODED ROOF VENTILATORS



MEMBER