



Everything Starts With A Process...

Start With Daltec Process Fans

Rotor Design: 130" dia. Backward Inclined, DWDI

Construction:

Rotor Diameter: 130" [3307 mm]

Rotor Material: ASTM A514 Gr. S
High Strength Steel

Wear Protection: ¼" Chromium Carbide
on ¼" CS
Plug Welded on Blades

Fan Shaft Size: 23" [580 mm] dia. **Shaft Material:** ASTMA688, Forging
with Integral Hub

Design Details:

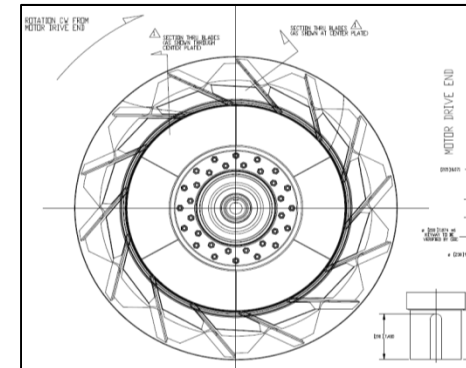
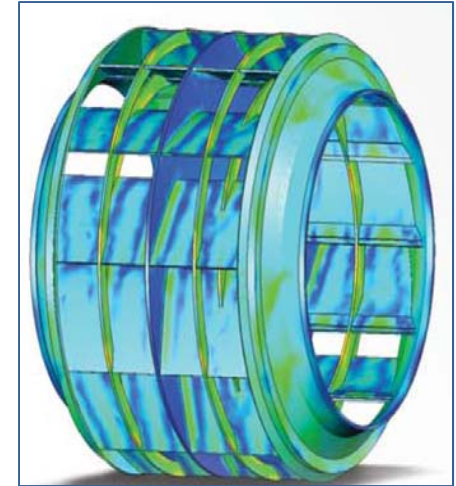
First Critical Sd: 862 rpm

Operating: 590 rpm

Tip Speed: 20,100 fpm [102 m/s]

Weight: 51,743 lbs [23,470 kg]

Inertia: 484,913 lb-ft²
[20,415 kg-m²]



AFTERMARKET REPLACEMENT ROTOR, PELLETIZING PLANT – BAHRAIN